



GAT MONTHLY MEMBERSHIP PROGRESS REPORT

Results as of: 2/28/2022

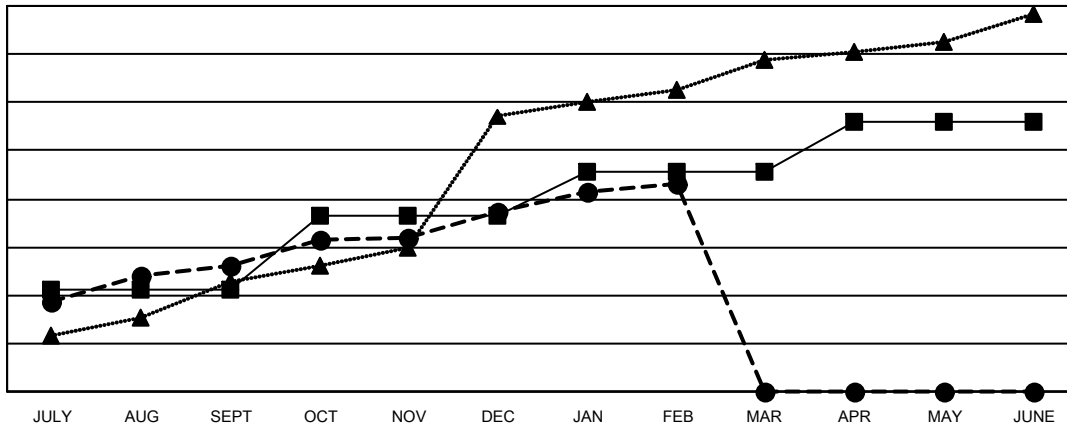
Multiple District 321

LOCATION: INDIA

Clubs			
RESULTS FOR 2021-2022			
QUARTER	NEW CLUB GOAL	NEW CLUBS	DROPPED CLUBS
JULY/AUG/SEPT	42	52	61
OCT/NOV/DEC	31	23	39
JAN/FEB/MAR	18	11	11
APR/MAY/JUNE	21	0	0

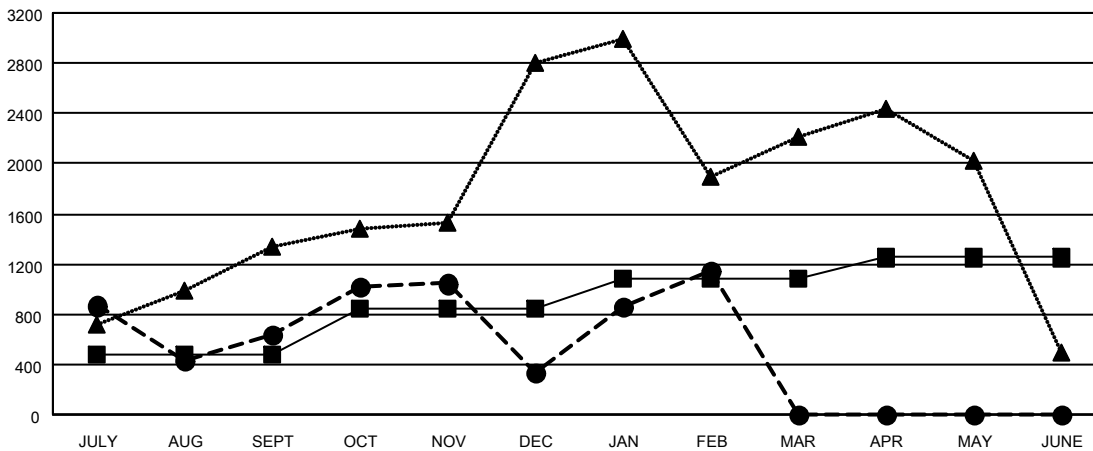
Members			
RESULTS FOR 2021-2022			
QUARTER	MEMBER GROWTH NET GOAL	MEMBER GROWTH ACTUAL	DROPPED MEMBERS ACTUAL (including transfers)
JULY/AUG/SEPT	480	2,516	1,644
OCT/NOV/DEC	370	1,601	1,744
JAN/FEB/MAR	235	1,437	456
APR/MAY/JUNE	165	0	0

GOALS AND ACTUAL NEW CLUBS CUMULATIVE



- - CURRENT YEAR GOALS FOR NEW CLUBS
- - CURRENT YEAR ACTUAL NEW CLUBS
- ▲ - LAST YEAR ACTUAL NEW CLUBS

GOALS AND ACTUAL MEMBERS CUMULATIVE



- - MEMBER GROWTH NET GOAL
- - MEMBER GROWTH ACTUAL
- ▲ - LAST YEAR MEMBERSHIP ACTUAL

DROPPED CLUBS: 111	544 CLUBS OF 1202 ADDED 1 OR MORE NEW MEMBERS	GENDER DISTRIBUTION
DROPPED MEMBERS	CLICK HERE FOR CUMULATIVE MEMBERSHIP DATA	MALE 22,003 (68.99%)
DECEASED 79		FEMALE 9,878 (30.97%)
CLUB CANCELLED 1,551		NON BINARY 0 (0.00%)
OTHER 2,219		PREFER NOT TO ANSWER 14 (0.04%)
TOTAL 3,849		TOTAL FAMILY UNIT MEMBERS 18,941
		FAMILY MEMBERS PAYING HALF DUES 11,481